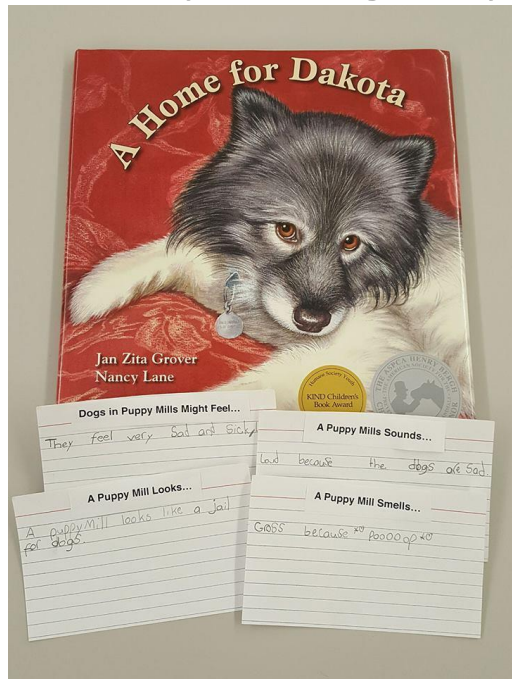


# Humane Education: Teaching English by Teaching Kindness to Animals

Thursday, May 30th at 1:00 pm - 2:15 pm

Location: Garden State A

Hyatt Regency Hotel, New Brunswick

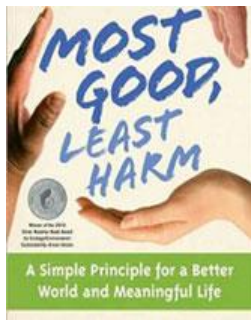




INSTITUTE FOR  
HUMANE EDUCATION

# What is Humane Education?

- A type of character education, including animal well-being
- Expanding use – growing faster than the research
- Most teachers hold positive perceptions of humane education.

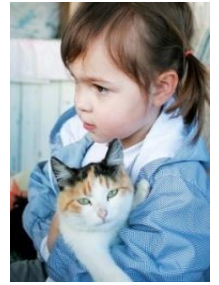


**TEACH**kind

Free humane education materials and policy resources  
for K-12 and college educators



# Animals Appeal to Children



- From an early age, children show an interest in animals.
- A Humane Society of the US study demonstrated 99.3% of children aged 3 to 13 wanted to have pets.

## The Interest in Animals Leads to Impact on Children:

- Animals facilitate conversation & decrease anxiety.



# Ice Breaker

## Humane Education Scenarios

- 1. One reader per group.
- 2. Discuss
- 3. Write possible solutions
- 4. Come to consensus on one group solution.
- 5. Be prepared to report out.

# Humane Education Scenarios

- Have you ever had to help someone in need?
- Read the situation
- (DEPENDING ON YOUR SCENARIO)

Post-reporting out: What did you decide? OR  
What can we do to prevent these types of situations from occurring?

WIDA Standards: Speaking, Listening, Reading

# Not Always Desirable to Have a Live Animal







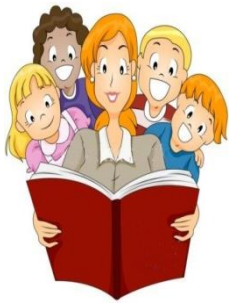
# Safe Topics & Species

- The “gateway” animals



- Familiarity invites student sharing





# Student & Teacher Connection

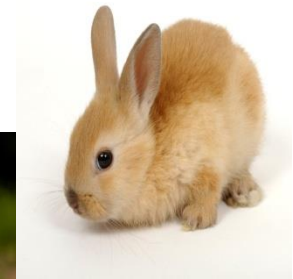
- Enhanced closeness between the students and the teacher.
- Two-way street
  - Mutual goodwill feeling toward the animals
- Outside of school hours





# Age, Gender, and Culture of Student

- Considerations in the delivery & reception of humane education
- Gender
  - Types of tasks
  - Types of species
  - Age



- Physical Environment/Culture

You can name her whatever you like but be sure it's something you can remember. You'll be using it as a security question answer for the rest of your life.





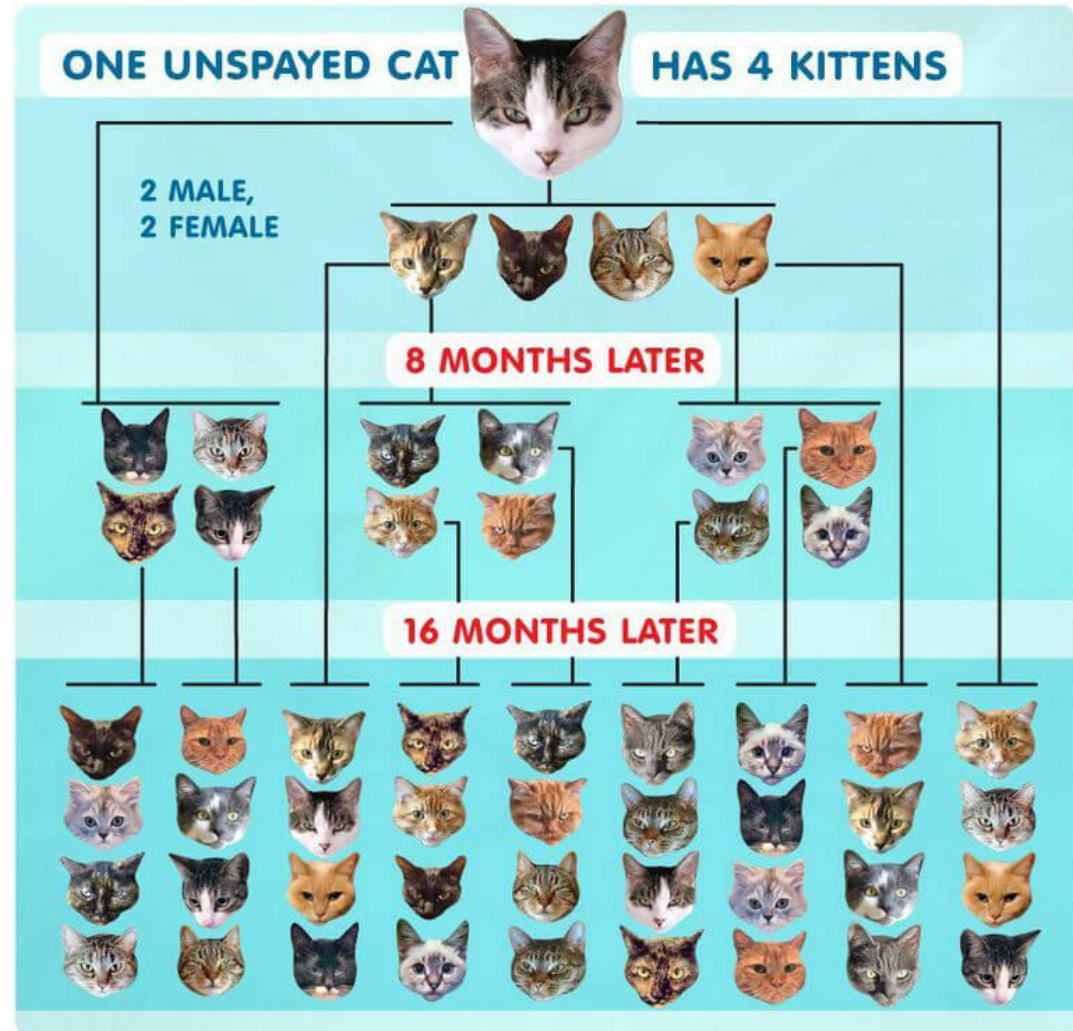
# **Your Turn 😊**

## **English Grammar at the Farm Sanctuary!**



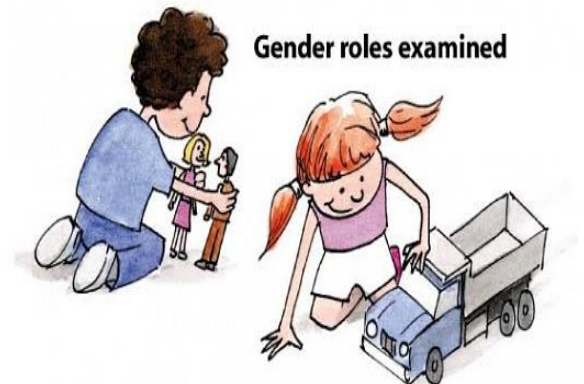
# Too Many Puppies? A Math Lesson with a Humane Education Message! (Math English Vocabulary)

Facts: Every year, **6 to 8 million animals enter animal shelters in the U.S.**, where they'll wait for their forever home. This is an overpopulation crisis.



# Conclusions of the Study

- Humane education effectively increases student motivation and engagement.
- Consider culture, gender, and school leadership
- Develops student curiosity & interest





This room celebrates my egocentric  
disregard for other species.



# Websites & Handouts

Your handouts come from some of these websites

\*standards-aligned / done for you!

<https://teachheart.org/>

<https://www.peta.org/teachkind/>

What did I give you?

1. [Share the World DVD & curriculum kit](#) – available in Spanish! (Teachkind)
2. Humane alternatives to chicken hatching lessons ([United Poultry Concerns](#)) – talk to others – the science teacher/math teacher



# Visuals of Humane Education



# Where else can you go?

- Farm Sanctuary visits to NJ & animal cruelty speakers too...

<https://www.farmsanctuary.org/humane-education/>

- Humane Education Coalition

<https://www.hecoalition.org/>

(partners page) – comprehensive list

- Act Asia – resources for Chinese students -

<https://www.actasia.org/>

# Language Arts – Humane Education

- Reading List – **animal friendly book list** – many topics

<https://nhes.org/humane-education/recommended-reading-list/>



- KIND News – samples provided

<https://redrover.org/readers/kind-news-magazine/>



# LOHVNJ & My Contact

- [HECommittee@hotmail.com](mailto:HECommittee@hotmail.com) (my email)

My organization is the

Humane Education Committee

[www.humaneeducationcommittee.org](http://www.humaneeducationcommittee.org)

- “NJEA Review” – copy of my article to take home

- League Of Humane Voters of NJ



You care about animals & vote? Then, it's good to join – free! [www.lohvnj.org](http://www.lohvnj.org)