

How Can My Child Access School-Based Services When We Do Not Have a Permanent Home?

McKinney-Vento Parent Presentation
January 2023

Diahann De Ruggiero

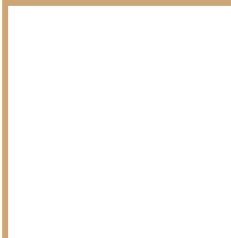
McKinney-Vento Region I Director
Bergen, Hunterdon, Passaic, Somerset
Sussex and Warren Counties
diader@bergen.org
201-343-6000 ext 6588

Massiel Sanabria-Lemos


McKinney-Vento Bilingual Parent Liaison
Bergen, Hunterdon, Passaic, Somerset
Sussex and Warren Counties
massan@bergen.org
201-343-6000 ext 6585

Bernadette Noll

McKinney-Navigator Region I
Hunterdon, Sussex, Warren Counties
bernadetteluzama@gmail.com
732-455-2227



How Do You Define
“Homelessness” ?





McKinney-Vento Training 2023

KNOW

What do you know about McKinney-Vento?

WANT TO KNOW

What do you want to know about McKinney-Vento?

LEARNED

What have you learned about McKinney-Vento? (complete at the end of training)

Housing and Urban Development

[HUD Resources for New Jersey](#)
[HUD definition of homelessness](#)

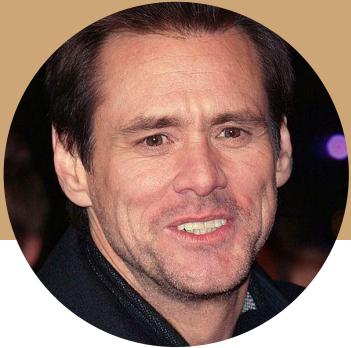
McKinney-Vento Education for Homeless Children and Youth

[National Center for Homeless Resources](#)
[National Center for Homeless Definition](#)

Safety is not the absence
of threat; it is the presence
of connection.

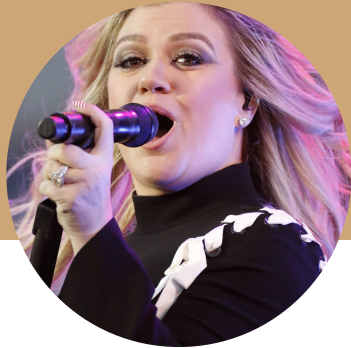
Gabor Mate

Temporarily Displaced



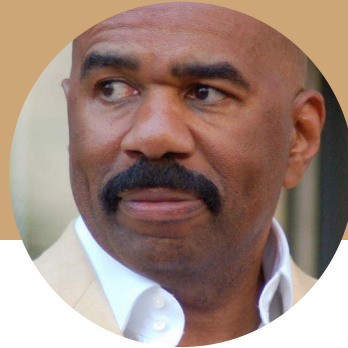
Jim Carrey

When he was a teenager living in Canada with his parents, they fell on hard times and the family slept in a VW van. When he was older, he camped out in a tent on the lawn of one of his older sisters.



Kelly Clarkson

The *American Idol* star lost her first LA apartment to a fire and had to live out of her car or in shelters before her big audition



Steve Harvey

He was homeless and lived out of his 1976 Ford for three years and lived on bologna sandwiches back in the late 80s. He showered at gas stations.



J Lo

When she left her mother's house at age 18 to become a dancer and lived on her own, she spent some nights sleeping on a cot in a dance studio.

The opposite of
fitting in is
belonging.

Brene Brown

What is the McKinney-Vento National Act?

- Federal law that ensures the immediate enrollment of students that are displaced (ages 3-20).
- Any student who lacks a fixed, regular, and adequate nighttime residence.
 - Doubling up
- Student living in motels, hotel, trailer parks or campgrounds due to lack of alternative accommodations.

Potential Warning Signs of Homelessness

- Attendance at many different schools
- Struggling academically
- Lack of basic school supplies
- Inconsistent grooming/lack of shower
- Wearing same clothes
- Chronic hunger (may hoard food)
- Fatigue (may fall asleep in class)
- Disruptive Behavior/Invisible Behavior
- Unwillingness to form relationships with peers and teachers

These are potential signs

How You Can Support Your School Aged Child/Youth (3 years old - 20 years)

- Maintain an ongoing dialogue with Liaison, School Counselor, Nurse, Safe Teacher
- Academic Supports (before or after school tutoring)
- School Supplies are Accessible through Your MKV Liaison
(Examples: Hygiene packs, backpacks, uniforms, notebooks, etc)
- Ask your MKV Liaison to guide you towards resources in your county
- Talk to the student's school counselor regarding academic or behavioral issues
- Create opportunities for social interaction with peers (Examples: join clubs or sports team -fees are included).

Suggestions

Know your District Liaisons: [NJDOE Liaison List](#)

State Resource list online: <https://www.njhelps.gov/>

MAP Making Access Possible: <https://viewer.mapme.com/makingaccesspossible>

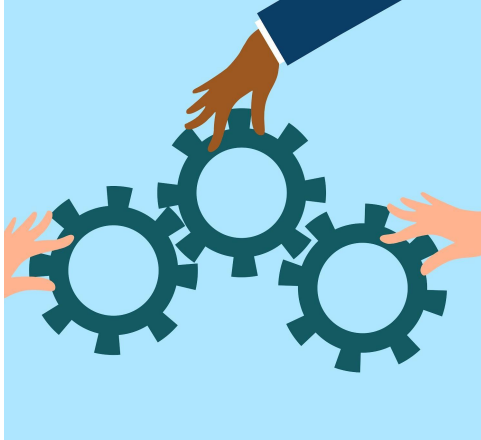
Let's now answer
questions from the
chat

Are there any other
questions?

We're located at Bergen County Special Services

... and we're so excited to collaborate with you!

Thank you for your patience, time and attention.



Our Region I McKinney-Vento Team
Would like to Thank
The Parents and NJ TESOL/BE Community

Diahann De Ruggiero

McKinney-Vento Region I Director
Bergen, Hunterdon, Passaic, Somerset
Sussex and Warren Counties
diader@bergen.org
201-343-6000 ext 6588

Massiel Sanabria-Lemos

McKinney-Vento Bilingual Parent Liaison
Bergen, Hunterdon, Passaic, Somerset
Sussex and Warren Counties
massan@bergen.org
201-343-6000 ext 6585

Bernadette Noll

McKinney-Navigator Region I
Hunterdon, Sussex, Warren Counties
bernadetteluzama@gmail.com
732-455-2227